



CORE XL



QUICK & LEAN NUMBER PLATES

With two printers and large external mounts, our Core XL system is designed for high-volume number plate production. Fully loaded the Core XL can print 200 paired number plates without needing resetting, ideal for busy pre-sales teams.

Additional services include our corporate branded components, waste plate recycling and managerial oversight, even for multiple branches



EFFICIENT

Easy to maintain printers and 200 panel reflective rolls significantly lowers operator interaction.



COMPLIANT

Bundled software enforces BSAU 145e standards, validates registrations and records all activity.



OUTPUT

Each XL printer produces 550 standard or lipped number plates per ribbon without being changed.



SYSTEM OPTIONS

Customise with corporate branded components & gain production oversight by syncing to our online portal.

Note: Requires a Windows PC, Internet connectivity and minimum operational conditions.



CORE XL SYSTEM



DUAL PRINTERS

The Core XL features two CL-S621 Printers using large external mounts for 200 panel rolls. This dual setup produces high volumes of compliant number plates.

Makes: Oblong number plates with/without lip

Printer: Two 4 inch CL-S621 thermal printers

Includes: External mount & cover for large rolls

Consumable: 110mm Black Ribbon (550 plates)

Speed: 10 Seconds per Print

PLATES SOFTWARE

Core systems include our plates software which combines a builder & records Log. Security & oversight is provided by user accounts and MS Windows Services.

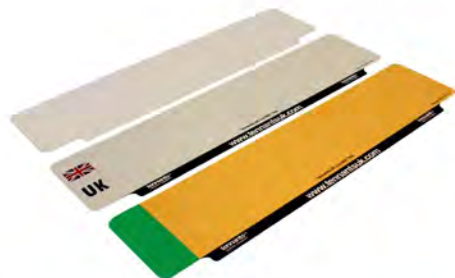
Design: BSAU 145e compliant plates builder

Records: RNPS-Log meets DVLA requirements

Security: User accounts & forced log-ons

Oversight: Windows active directory devices & print data

Branding: Supports corporate & individual templates



COMPLIANT COMPONENTS

The Core XL makes BSAU 14e certified number plates, by joining printed reflective to clear acrylic. To assist with assembly, this system includes a roller jig.

Specification: Printed reflective under clear acrylic

Reflective: Perforated 100/200 panel reflective rolls

Sheet Sizes: 520x111mm or lipped 520x127mm plates

Pre-Printed: Simple logos, lips, flags & borders

Restocking: Contracted or on-demand supply